

**Class**  
**KG**

---

# *Sample Questions*

---

Match the capital alphabets to its small alphabets.

B

f

S

n

F

r

N

s

R

b

X

j

T

x

J

t

# Speaking

Fill in the blanks and match the blends.

*cr + a =*

• *cri*

*cr + e =*

• *cru*

*cr + i =*

• *cro*

*cr + o =*

• *cra*

*cr + u =*

• *cre*

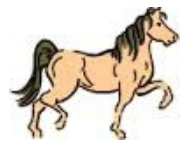
Fill in the missing sounds.



*ess*



*ack*



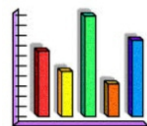
*ot*



*br*  *d*

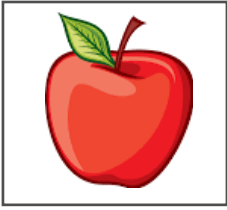


*pr*  *nt*

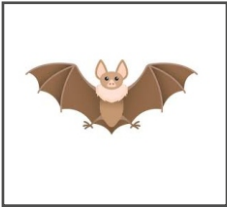


*aph*

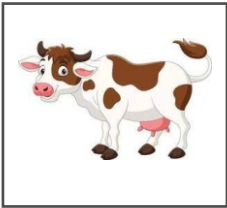
Trace and write the words that match each pictures:



APPLE



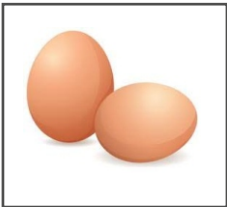
BAT



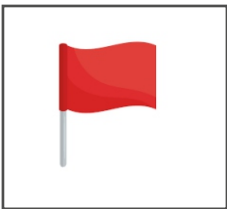
COW



DUCK



EGG



FLAG



GIRL