

Classes
9th-10th

Sample Questions

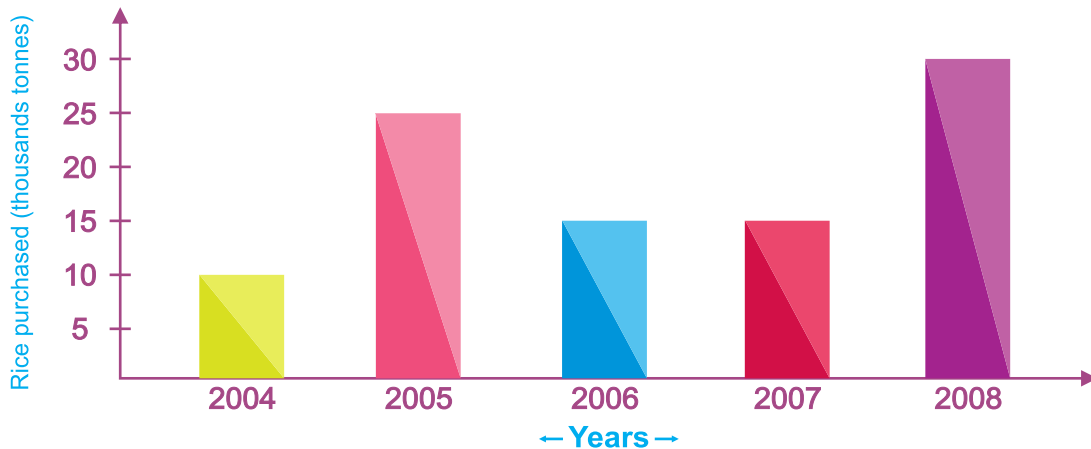
Colouring

Complete & make this landscape colourful with your imagination. You may add more objects into this picture



MATHS

The bar graph shows the amount of rice (in thousand tonnes) purchased by the government during the years 2004 to 2008



- 1 How much rice was purchased in 2005?
- 2 During which year, maximum rice was purchased?
- 3 Name the two years when same amount of rice was purchased?
- 4 In which year, least amount of rice was purchased?
- 5 How much rice was purchased in 2008?

 &

The pictograph shows the sale of flat televisions. Read the pictograph and answer the questions

Each  stands for 500 TV sets



- 1 Find the number of television sets sold in the month of April.
- 2 How many TV sets were sold during the last six months?
- 3 In which month, there was maximum sale of TV sets?
- 4 In which month, was least number of flat TV sets sold?
- 5 If the price of one TV set is 15,000, what is the total cost of all the TV sets sold?

ENGLISH

IN THE PASSAGE BELOW ARE 10 WORDS WITH A SILENT B IN THEM. WRITE THESE WORDS IN THE GIVEN BOXES

Rohan broke the table when an earthquake that felt like a bomb went off. He climbed back into his chair and combed his hair, which had been messed up in the explosion. A few crumbs from his dinner floated in the air and landed, without doubt, on his knee. His face and both his upper limbs were numb with shock, but he kept calm. He wondered whether the plumbing in the house had been affected. He was certainly indebted to the strong table for protecting him from the quake, although his thumb had been trapped and squashed by it.

1

6

2

7

3

8

4

9

5

10

MATCH THE FOLLOWING TO MAKE COLLECTIVE NOUN PHRASES

bunch

sticks

=

a bunch of grapes

bouquet

trees

=

bundle

stairs

=

chain

islands

=

clump

mountains

=

cluster

grapes

=

flight

labourers

=

gang

stars

=

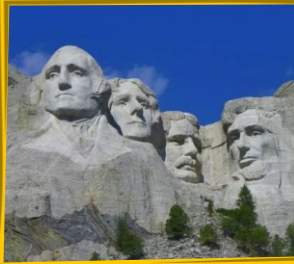
group

flowers

=



Look at the picture of some famous landmarks given below. Identify them



SCIENCE

READ THE ITEMS OF FOOD LISTED BELOW. CLASSIFY THEM INTO CORRECT CATEGORIES

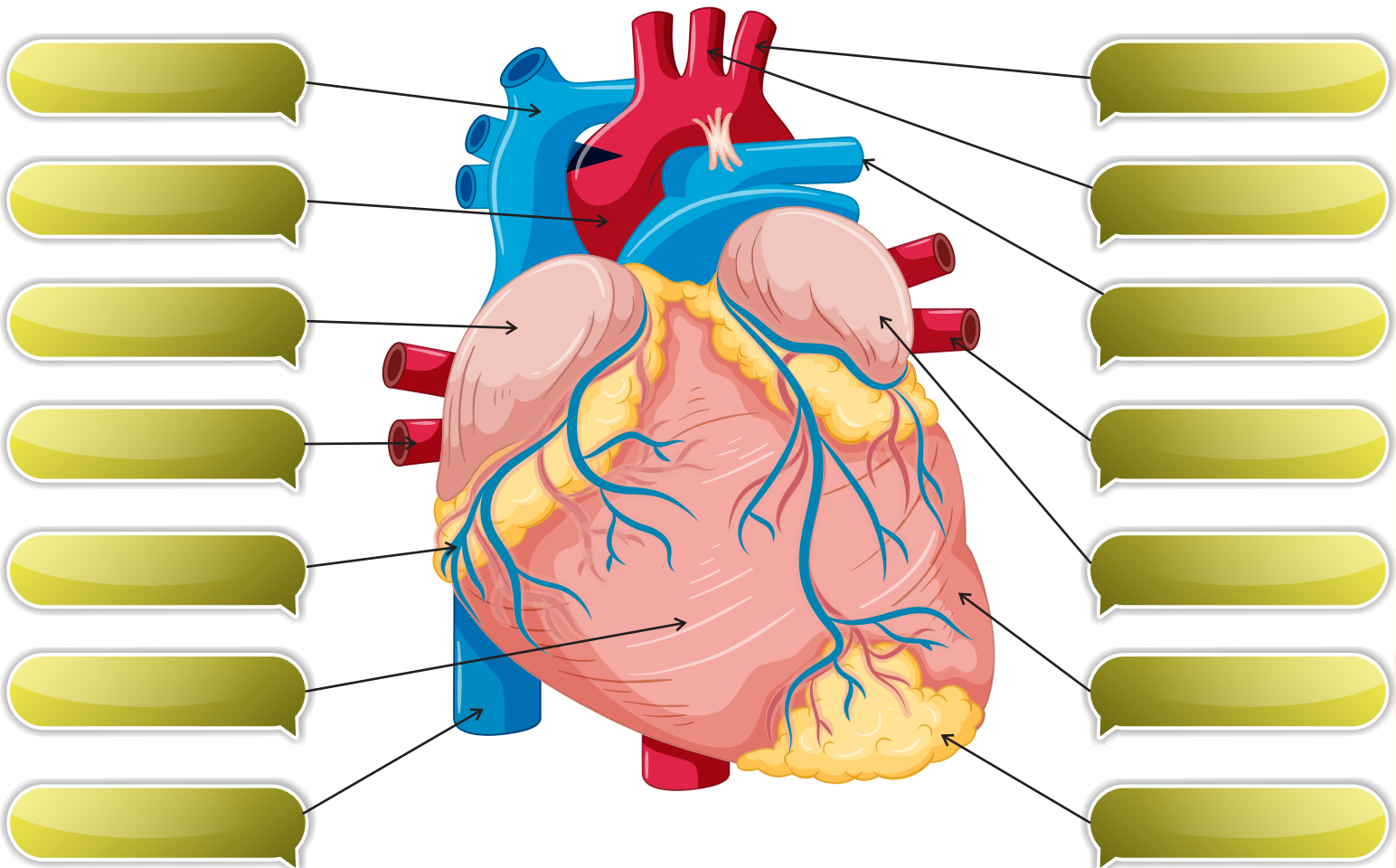
moong dal fish mustard oil sweet potato milk egg beans
butter paneer peas maize white bread rice chicken

Carbohydrate Rich Food Item

Protein Rich Food Item

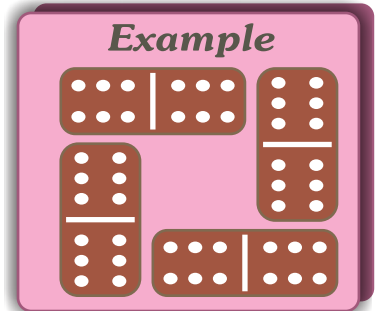
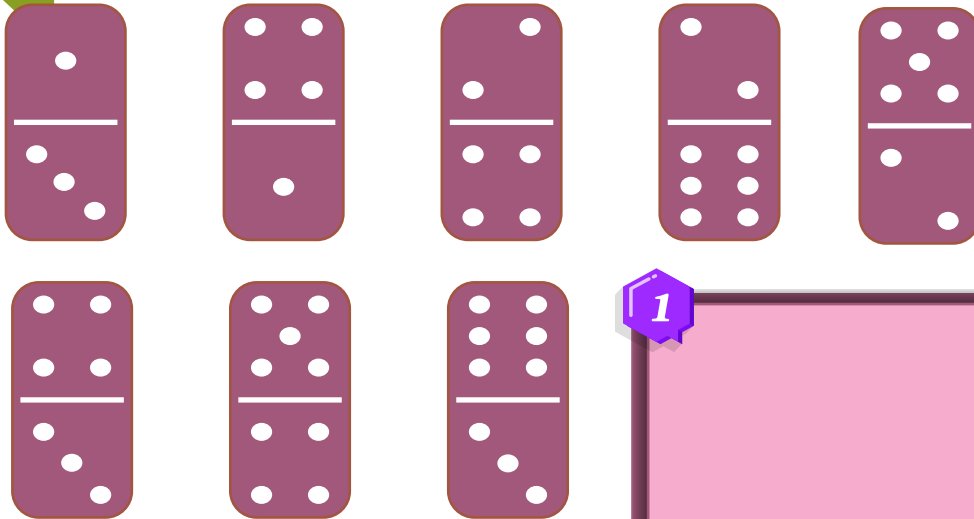
Fat Rich Food Item

LABEL THE HUMAN HEART



APTITUDE

Dominoes can be arranged into square picture frames. This example shows a frame where every side adds up to eighteen. Can you arrange the eight dominoes below into two square frames made of four pieces each, so that all the sides of both frames add up to ten?



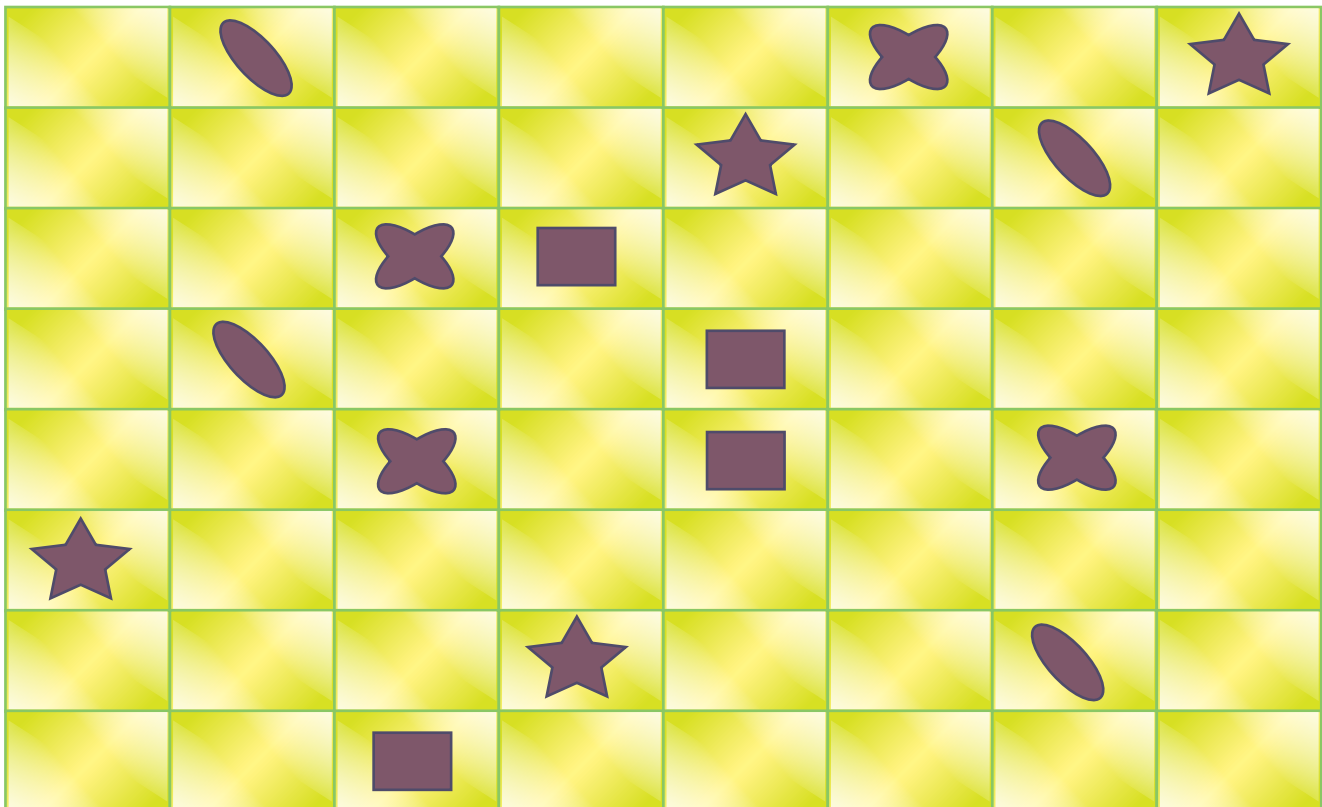
1



2

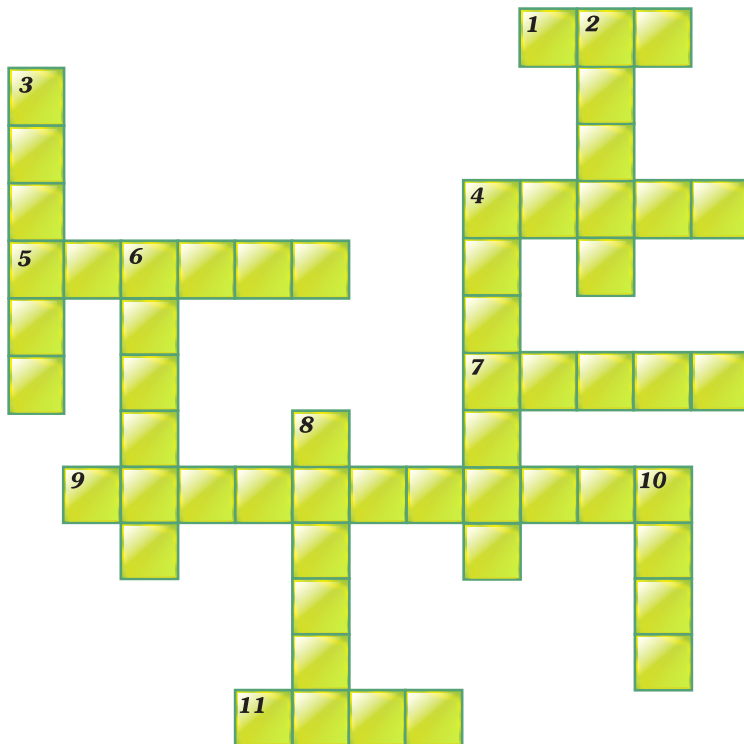


Can you divide this square on the right into four identical shapes, each composed of sixteen smaller squares, and each containing four different shapes?



Computer

Solve the crossword puzzle:



ACROSS

1. It is the short form of binary digit
4. A pointing device connected with a computer; named after an animal; held by one of the user's hands
5. A copy of a file that can be used if the original is damaged
7. A place where incoming emails are stored
9. The main circuit board of the computer to which other components of the system are connected
11. A group of binary digits or bits (usually eight) treated as a unit

DOWN

2. Anything you put into a computer—commands, programs, instructions
3. A place where outgoing emails are stored
4. It is like your television screen on which all the data is displayed
6. A bright, usually blinking indicator on the computer screen
8. A part of the computer that stores data or information temporarily
10. Any information that is put into, processed by or produced by a computer

Circle the 15 computer part words hidden in this puzzle

